

**Blübaum,Matthias** **A40**  

**Suermann,Uwe** **2675**  
 Simultan Oerlinghausen 2024 01.06.24  
*[Taktische Analyse 4.3 (15s)]*

D53: Damengambit (Hauptvariante, Abweichungen)

**1.d4 Sf6 2.c4 e6 3.Sf3 d5 4.Sc3**  
**Le7 5.Lg5 Sbd7 6.Dc2 c5**

[ 6...h6 7.cxd5 exd5 8.Lh4 c6 9.e3  
 Sh5 10.Lxe7 Dxe7 11.0-0-0 Sb6  
 12.Se5 Sf6 13.h3 Ld7 14.Ld3  
 0-0-0 15.The1 Kb8 16.Kb1 Tc8  
 17.g4 Tc7 18.f3 Td8 19.Dh2 Lc8  
 20.Lc2 Se8 21.e4 Piket,J (2640)-  
 San Segundo Carrillo,P (2505)  
 Madrid 1997 1-0 (44) ]

**7.cxd5**

[ 7.e3 cxd4 8.exd4 dxc4 9.Lxc4  
 Sb6 10.Lb3 Ld7 11.0-0 Tc8  
 12.Tad1 Sfd5 13.Lxe7 Dxe7 14.a3  
 Sxc3 15.bxc3 Lc6 16.Se5 0-0  
 17.Tfe1 Dg5 18.Sxc6 Txc6 19.Te5  
 Df6 20.Dd3 Tfc8 21.Lc2 Txc3  
 Linart,L (1613)-Sumbera,A (1684)  
 Ostrava 2012 0-1 (57) ]

**7...exd5N**

[ 7...cxd4 8.Sxd4 Sxd5 9.Lxe7  
 Sxe7 10.Scb5 Sd5 11.e4 Da5+  
 12.Kd1 Sb4 13.Dc3 0-0 14.Sb3  
 Da4 15.a3 Td8 16.axb4 Dxb3+  
 17.Kc1 Dxc3+ 18.bxc3 a6 19.f4  
 Sf6 20.e5 Ld7 21.Sd6 Sd5  
 22.Sxb7 Olivo,P (1700)-Carabetta,A  
 (1497) Cutro 2005 1-0 (40) ]  
 [ 7...Sxd5 8.Lxe7 Dxe7 9.Sxd5  
 exd5 10.g3 c4 11.Lg2 0-0 12.0-0  
 b5 13.b3 Sb6 14.bxc4 Sxc4  
 15.Se1 Lg4 16.e3 Tac8 17.Dd3  
 Da3 18.Dxa3 Sxa3 19.Sf3 Tc3  
 20.Sd2 Le2 21.Tfc1 Txc1+ 22.Txc1  
 Arencibia Rodriguez,W (2550)-San  
 Segundo Carrillo,P (2495)  
 Ponferrada 1997 1-0 (50) ]

**8.dxc5 h6** Die Stellung ist

ausgeglichen. **9.Lh4 0-0**

[ Viel schwächer ist 9...Lxc5  
 10.0-0-0± ]

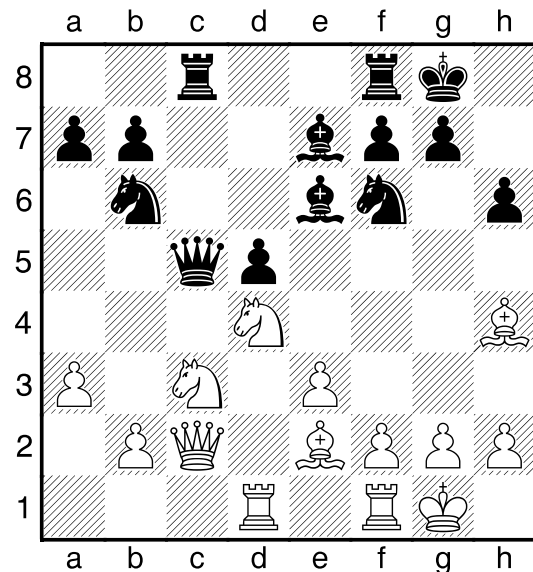
**10.e3 Da5 0.43/25**

[ Bloß nicht 10...Lxc5 11.Td1± ]

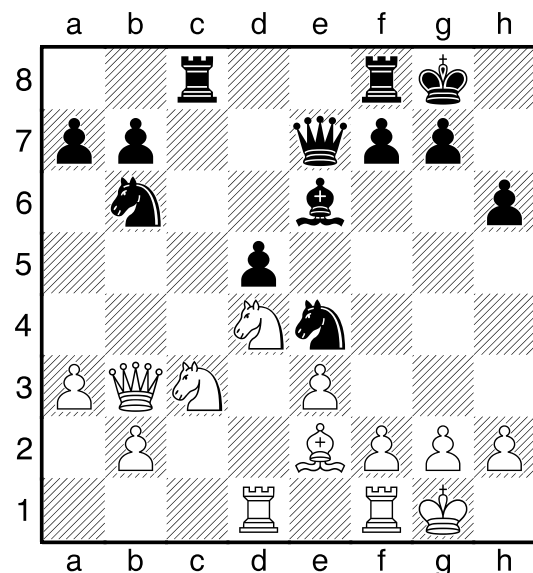
[ 10...Sxc5= -0.03/20 11.Ld3 Le6 ]

**11.a3± Dxc5 12.Td1 Sb6 13.Le2**

**Le6 14.0-0 Tac8 15.Sd4**



**15...Se4! 16.Lxe7 Dxe7 17.Db3**



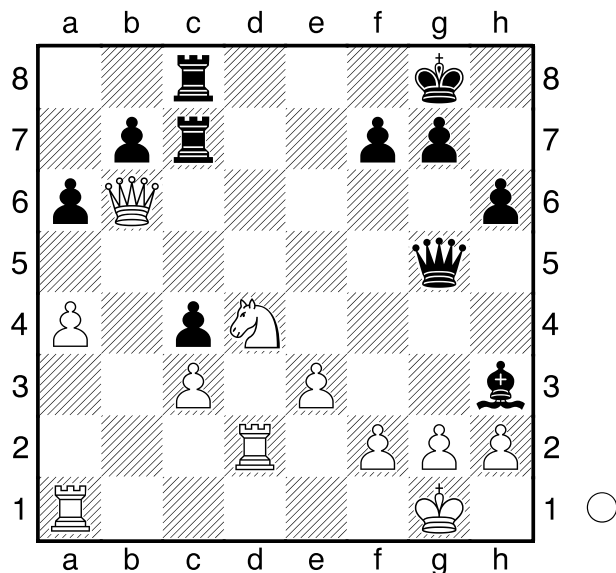
**17...Sxc3! 18.bxc3 Ld7 19.Tc1 Tc7**  
**20.Lb5 Sc4 21.Tfd1 a6 0.12/23**

[ 21...Lg4 -0.27/25 sieht stärker aus.  
 22.Te1 Le6 ]

**22.Lxc4= dxc4 23.Db6 Tfc8 24.Ta1**

**Lg4 25.Td2 Dg5 26.a4 Lh3**

[ 26...h5 27.Kh1 10 h4 5 28.h3 4  
Lh5 3 29.Tb1 1.6 De5 16 30.Te1  
1.9 Lg6 2 31.e4 0.7 Df4 0.7  
32.Tde2 5 ]

**28.gxh3+- Dxh3 29.Te1 Tc5?**

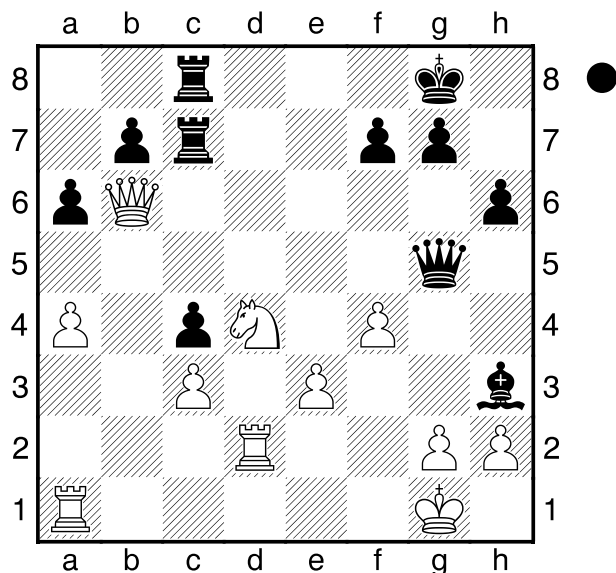
3.63/25

[ 29...Te7 1.99/20 ist wohl besser.  
30.Kh1 f6 ]

**30.Dxb7 Te8 31.Df3 Dh4 32.Dg3 Df6 33.e4**

Gewichteter Fehlerwert: Weiß=0.08  
(makellos) /Schwarz=0.31

**1-0**

**27.f4****27...Dh5 2.08/20**

[ 27...De7!= 0.00/22 28.e4 ( 28.gxh3  
Dxe3+ 29.Tf2 Dxc3= ) 28...Dxe4 ]

[ 27...De7 20 28.Te2 5 Lg4 4  
29.Tee1 3 De4 0.3 30.h3 3 Lf5 3  
31.Tad1 3 Lg6 3 32.Dd6 6 f6 16  
33.Kf2 0.8 Lh5 1.3 34.Td2 0.8 Le8  
0.5 35.Db4 1 Td8 0.4 36.Db1 3 ]