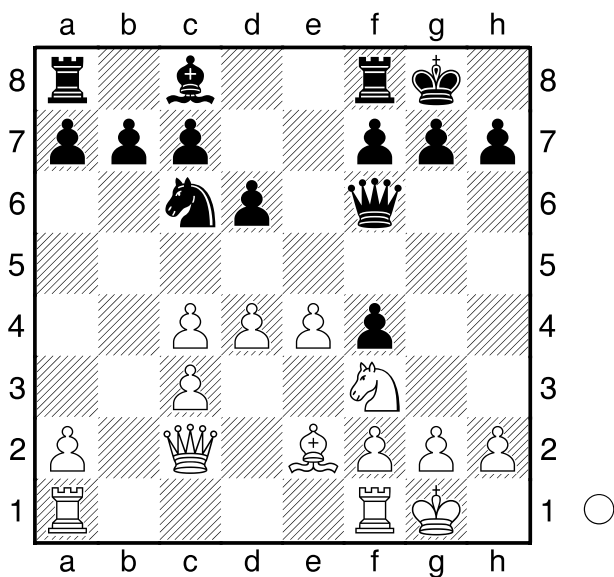


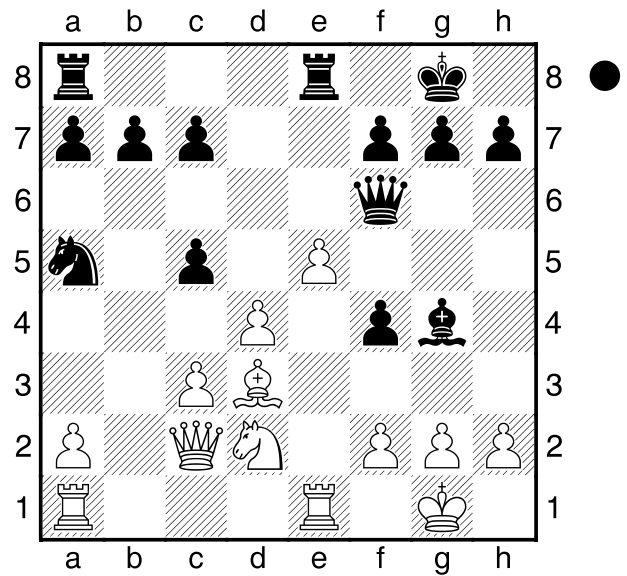
□ Ding,Liren **2788**  
 ■ Nepomniachtchi,Ian **2795**  
 FIDE World Chess Championship 2023 (4)  
 [Taktische Analyse 4.3 (10s)]

1.c4 Sf6 2.Sc3 e5 3.Sf3 Sc6 4.e3  
 Lb4 5.Dc2 Lxc3 6.bxc3 d6 7.e4 0-0  
 8.Le2 Sh5 0.15/21  
 [ 8...b6 -0.22/26 ]  
 9.d4= Sf4 0.57/27  
 [ 9...Sf6= 0.14/26 ]  
 10.Lxf4± exf4 11.0-0 Df6

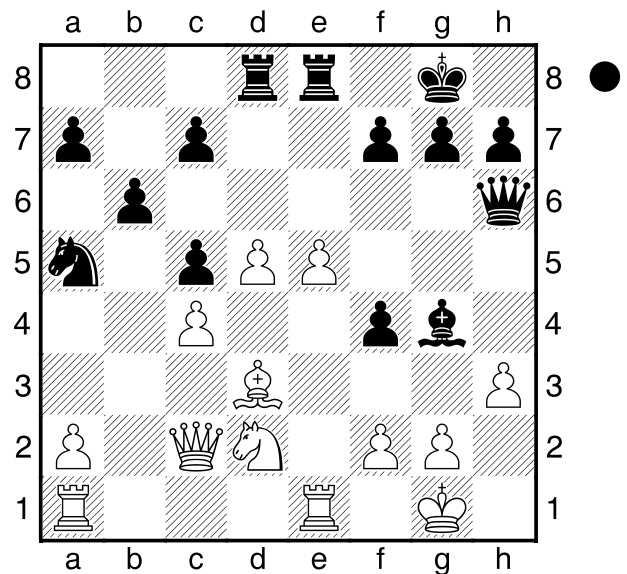


12.Tfe1! Te8 13.Ld3 0.00/31  
 [ 13.c5± 0.71/26 ]  
 13...Lg4= 14.Sd2 Sa5 0.57/28  
 [ 14...Tad8= -0.08/26 ]  
 15.c5 dxc5 16.e5

(Diagramm)

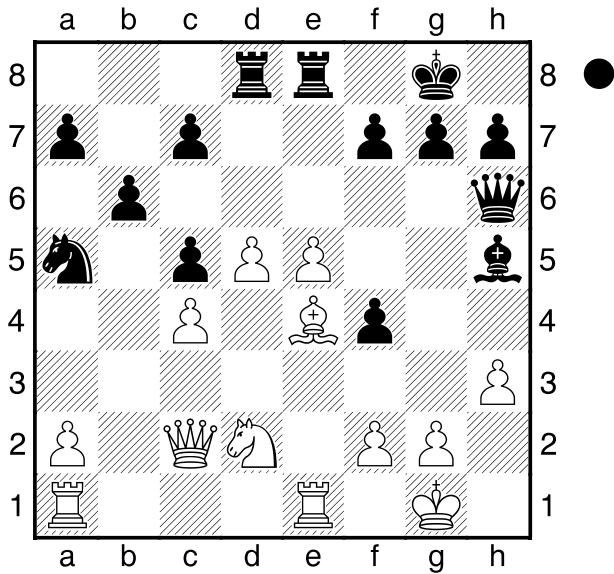


16...Dh6 17.d5 Verhindert Sc6. Weiss hat Kompensation. 17...Tad8 18.c4 b6 19.h3

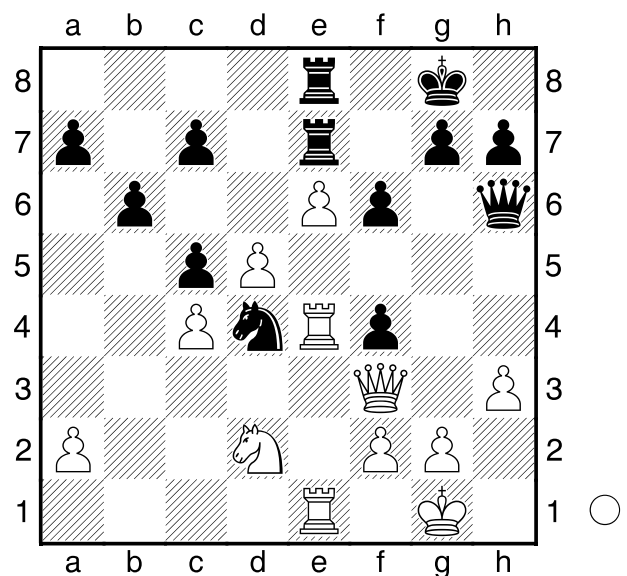
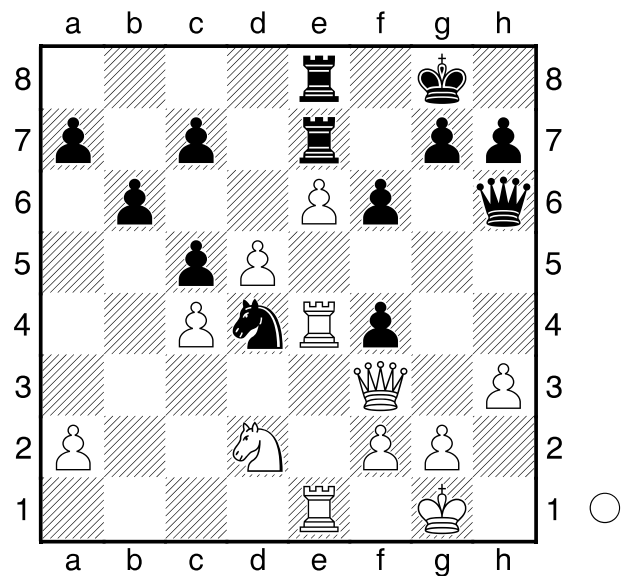


19...Lh5 20.Le4

(Diagramm)

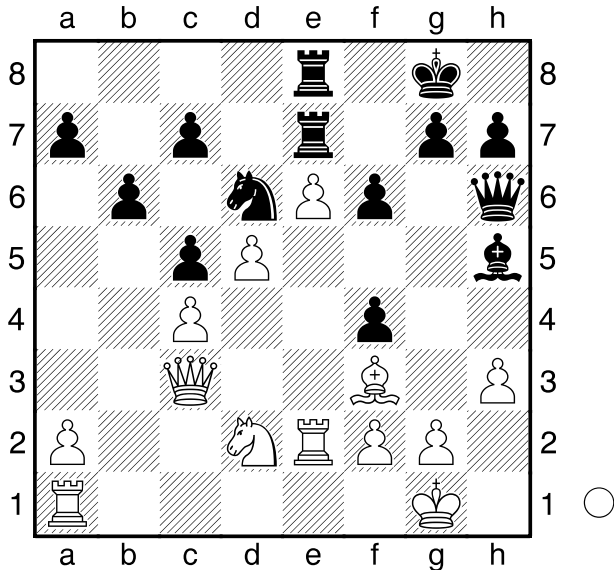


**20...Te7! 21.Dc3 Tde8 22.Lf3 Sb7**  
**23.Te2** 0.00/30  
 [ 23.Lxh5± 0.34/31 scheint genauer.  
 Dxh5 24.Sf3 ]  
**23...f6 24.e6 Sd6** 0.31/27  
 [ 24...Lg6= 0.00/30 ]

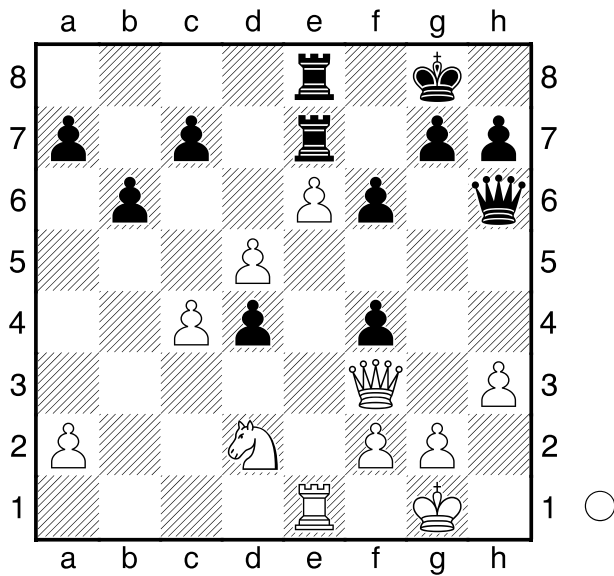


**29.Txd4!+- cxd4**

(Diagramm)



**25.Tae1** 0.00/27  
 [ 25.Lxh5!± 0.31/27 Dxh5 26.Dd3 ]  
**25...Sf5** 0.67/26  
 [ 25...Lg6= 0.00/27 ]  
**26.Lxh5 Dxh5 27.Te4 Dh6 28.Df3**  
 0.39/28  
 [ Günstiger ist 28.Dd3 0.70/25 ]  
**28...Sd4?** 2.88/25  
 [ Vorzuziehen ist 28...g5± 0.39/28 ]



**30.Sb3! g5? 5.41/25**

[ 30...d3 2.62/27 31.Sd4 d2 ]

**31.Sxd4** Weiß steht klar auf Gewinn.

**31...Dg6 32.g4 fxg3 33.fxg3 h5**

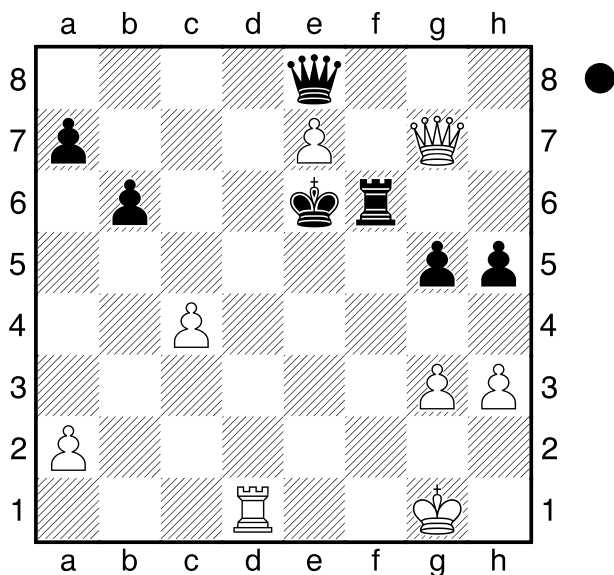
**34.Sf5 Th7 35.De4 Kh8 36.e7 Df7**

**37.d6 cxd6 38.Sxd6 Dg8 39.Sxe8**

**Dxe8** Endspiel KDT-KDT **40.De6 Kg7**

**41.Tf1 Th6 42.Td1 f5 43.De5+ Kf7**

**44.Dxf5+ Tf6 45.Dh7+ Ke6 46.Dg7**



Zielt auf Te1+ ab. **46...Tg6 47.Df8**

Gewichteter Fehlerwert: Weiß=0.08

(makellos) /Schwarz=0.41

**1-0**